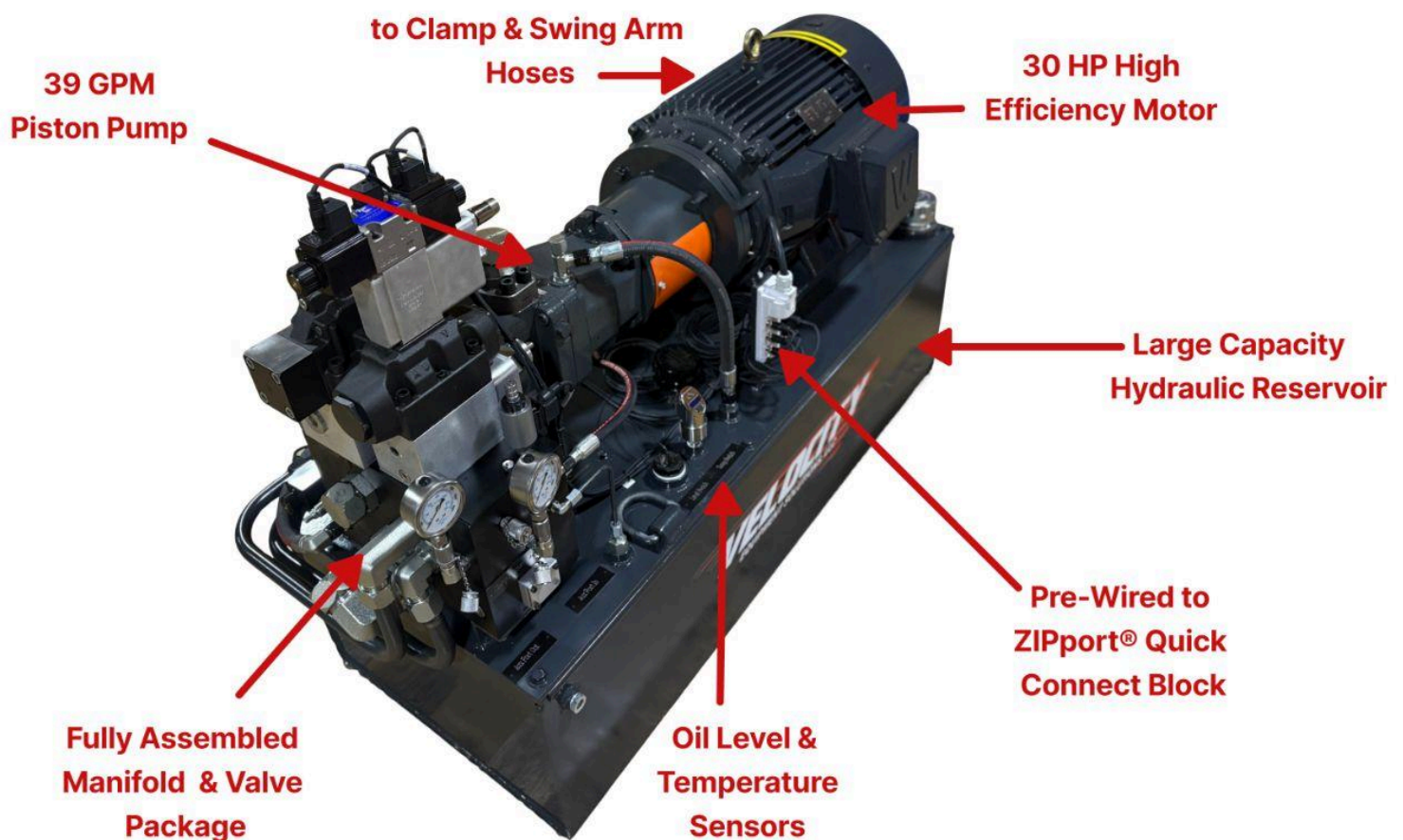




*Direct Drop-in Replacement for Uniloy® 350R Series  
Machines*

## Retrofit Hydraulic Power Pack

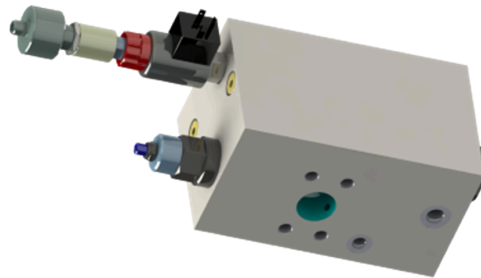


- Fully Engineered Pre-Packaged Drop In System Designed for Quick Field Installation
- Everything Needed to Upgrade your Existing Uniloy® 350R Series Machine's Hydraulic System Package Installed in 1-2 Days by Customer or Our Highly Trained Technicians
  - Full Technical and Parts Support to Ensure Continuing Trouble Free Operation
  - Increase Machine Performance and Energy Efficiency while Eliminating Downtime

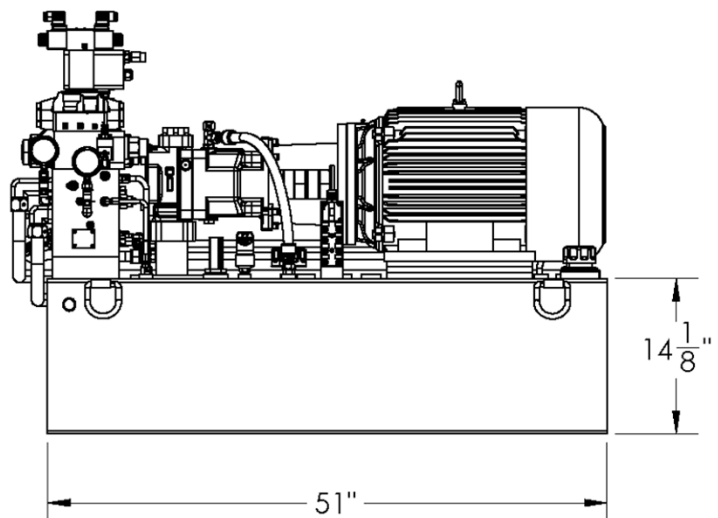
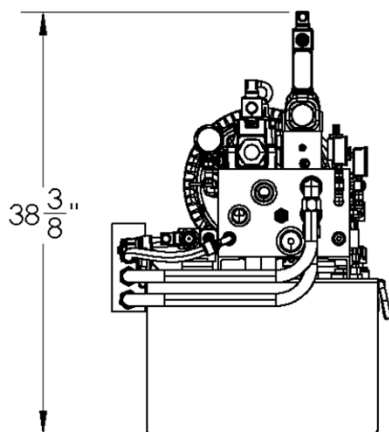
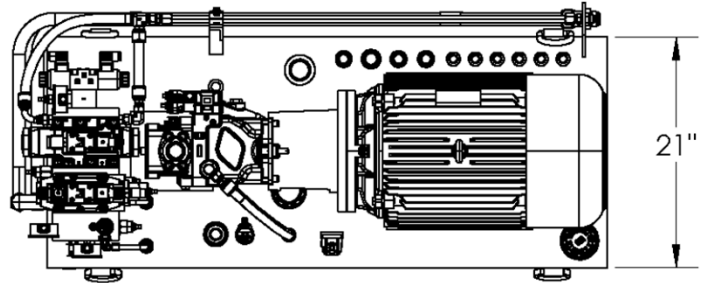
**TOLL FREE 800-521-1368**



**PRE-MOUNTED HEAT EXCHANGER  
FILTER ASSEMBLY**



**CLAMP SAFETY VALVE  
BLOCK OPTION**



**TOLL FREE 800-521-1368**



## **Full Set Of Safety Features**

- **60 Gallon Hydraulic Reservoir with Internal Baffles and Oil Sight Gauge**
- **Removable Reservoir Cover with Seal and Breather Fill Cap**
- **30 HP Universal Motor® High Efficiency Pump Motor 240/480 / 3PH / 60Hz**
- **39 GPM Positive Displacement Piston Pump Hard Piped Suction Line**
- **Oil Temperature Sensor with Digital Display and Adjustable Alarm**
- **Oil Fill Level Sensor with Machine Interface**
- **Integrated Hydraulic Manifold with All Valves Mounted and Clearly Labeled**
- **110 VAC or 24 VDC Solenoids**
- **Hard Piped Drain Lines**
- **Mold Open / Close Valve**
- **High Pressure Clamp Valve**
- **High and Low Pressure Relief Valves**
- **System Pressure Dump Valve**
- **High Capacity Shot Valve**
- **Swing Arm Valve**
- **High Visibility Hydraulic Gauges**
- **Door Safety Interlock Valve (Pneumatic or Electrically Actuated)**
- **Hard Piped Clamp Open and Close Connections**
- **Hard Piped Swing Arm Connections**
- **Hose and Fittings Package Included**
- **High Pressure Filter Assembly with Primary and Secondary Heat Exchangers Pre-Mounted**
- **Completely Pre-Assembled and Pre-Wired to ZIPport® Quick Connect blocks with integrated interface cable**
- **Pre-Wired LED Work Light Engineering Package with Complete Documentation including Schematics and Parts List**
- **All Spare or Replacement Parts in Stock for Immediate Delivery**
- **Optional Clamp Safety Logic Block Assembly**

**TOLL FREE 800-521-1368**