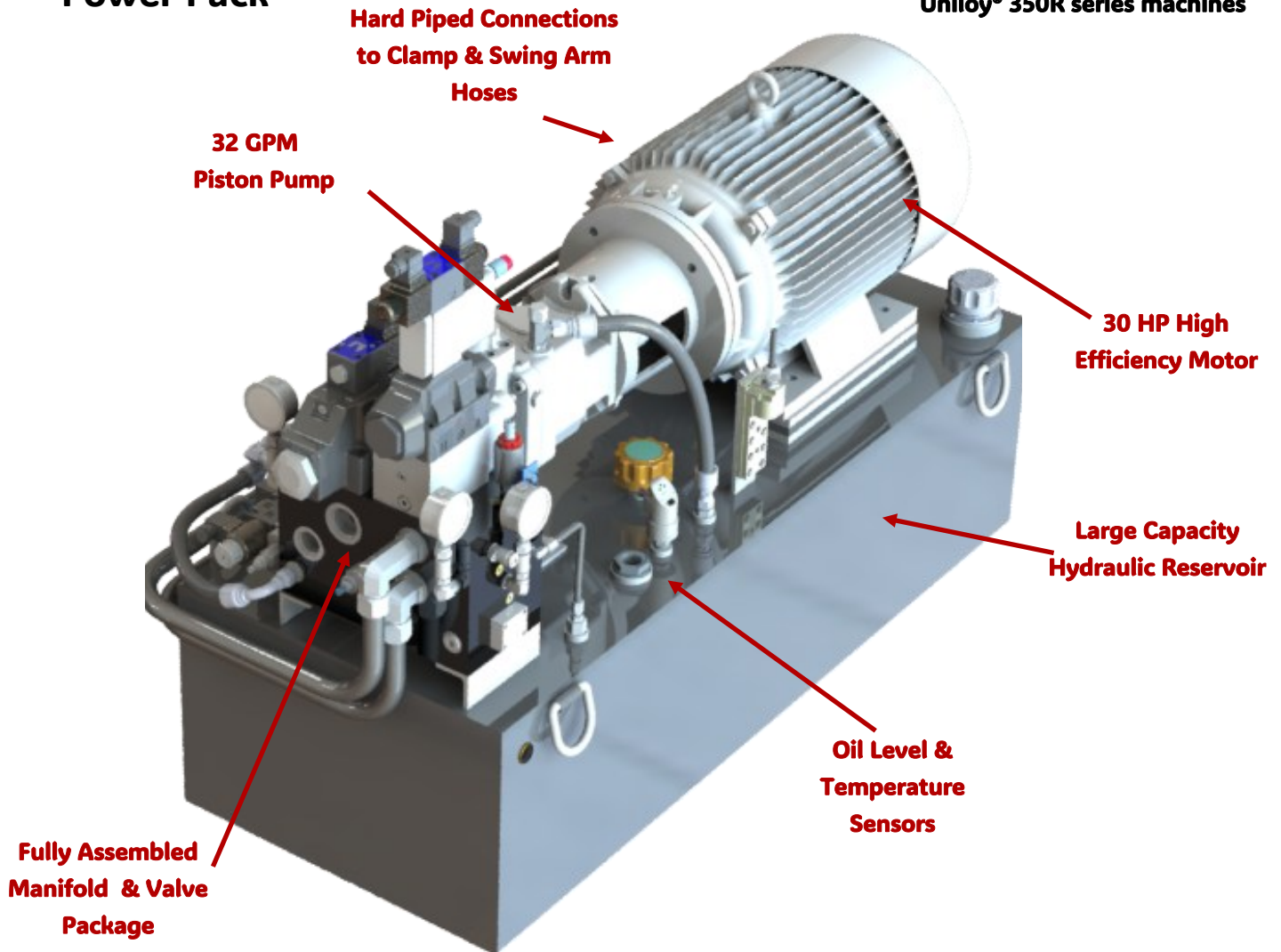




Retrofit Hydraulic Power Pack

Direct drop-in replacement for
Uniloy® 350R series machines



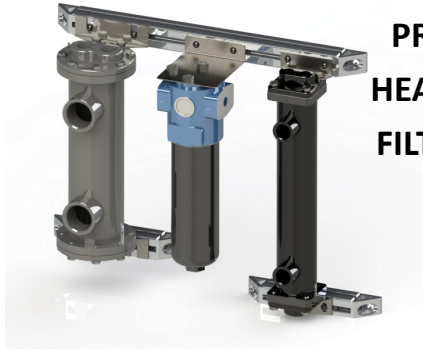
Fully Engineered Pre-Packaged Drop In System Designed for Quick Field Installation

**Everything Needed to Upgrade your Existing Uniloy® 350R Series Machine's
Hydraulic System**

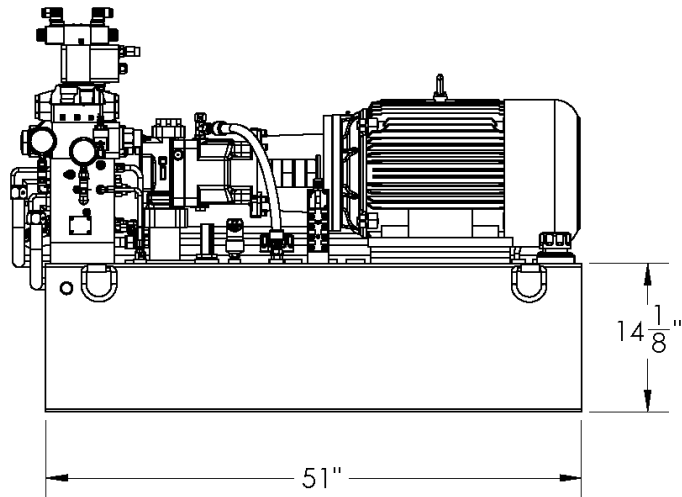
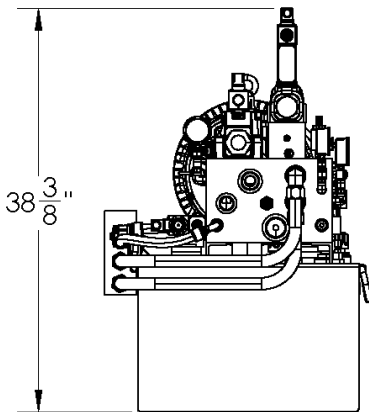
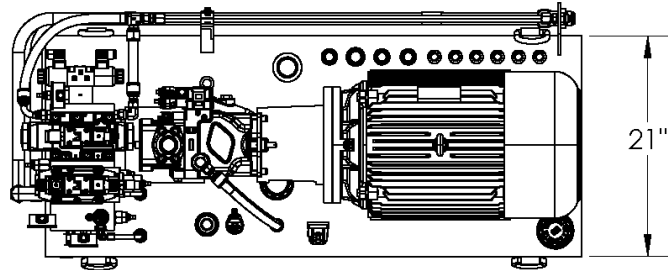
Package Installed in 1-2 Days by Customer or Our Highly Trained Technicians

**Full Technical and Parts Support to Ensure Continuing
Trouble Free Operation**

**Increase Machine Performance and Energy Efficiency while
Eliminating Downtime**

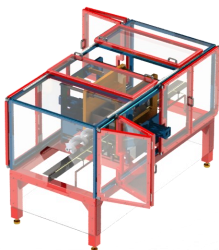


**PRE-MOUNTED
HEAT EXCHANGER
FILTER ASSEMBLY**

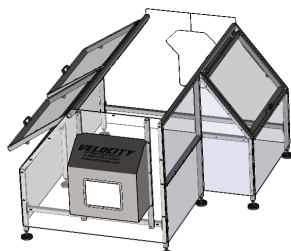


FULL SET OF FEATURES LISTED ON NEXT PAGE

Velocity Equipment Solutions manufactures equipment for every stage of your blow molding process. Click on an image below to learn more or scan the QR code on your mobile device for more information on these highly engineered, expertly supported, robust, customizable and surprisingly affordable manufacturing solutions.



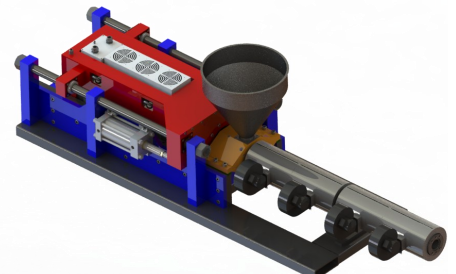
**RAPTOR™
VERTICAL
IMPACT
TRIMMER**



**HORIZONTAL
TRIMMER
GUARDS**



**NEW AND RE-
MANUFACTURED
EXTRUDER GEAR REDUCERS FOR UNILOY®**



**THUNDEBOLT™
DIRECT DRIVE
EXTRUDER
RETROFIT**



Features include:

- ♦ **60 Gallon Hydraulic Reservoir with Internal Baffles and Oil Sight Gauge**
- ♦ **Removable Reservoir Cover with Seal and Breather Fill Cap**
- ♦ **30 HP Universal Motor® High Efficiency Pump Motor 240/480 / 3PH / 60Hz**
- ♦ **32 GPM Positive Displacement Piston Pump**
- ♦ **Hard Piped Suction Line**
- ♦ **Oil Temperature Sensor with Digital Display and Adjustable Alarm**
- ♦ **Oil Fill Level Sensor with Machine Interface**
- ♦ **Integrated Hydraulic Manifold with All Valves Mounted and Clearly Labeled**
- ♦ **110 VAC or 24 VDC Solenoids**
- ♦ **Hard Piped Drain Lines**
- ♦ **Mold Open / Close Valve**
- ♦ **High Pressure Clamp Valve**
- ♦ **High and Low Pressure Relief Valves**
- ♦ **High Capacity Shot Valve**
- ♦ **Swing Arm Valve**
- ♦ **High Visibility Hydraulic Gauges**
- ♦ **Door Safety Interlock Valve** (Pneumatic or Electrically Actuated)
- ♦ **Hard Piped Clamp Open and Close Connections**
- ♦ **Hard Piped Swing Arm Connections**
- ♦ **Hose and Fittings Package Included**
- ♦ **High Pressure Filter Assembly with Primary and Secondary Heat Exchangers**
Pre-Mounted
- ♦ **Completely Pre-Assembled and Pre-Wired to ZIPport® Quick Connect blocks with**
integrated interface cable
- ♦ **Pre-Wired LED Work Light**
- ♦ **Engineering Package with Complete Documentation including**
Schematics and Parts List
- ♦ **All Spare or Replacement Parts in Stock for Immediate Delivery**
- ♦ **Optional Clamp Safety Logic Block Assembly**